

## Glashaboy Flood Relief Scheme [GFRS] Update Friday 26 April 2024



Good afternoon,

I am contacting you with an update on the works being carried out by Sorensen Civil Engineering for the Glashaboy Flood Relief Scheme.

### Hazelwood Shopping Centre

- Work will be completed at the entrance to Hazelwood SC adjacent to Bean & Leaf, by 7am tomorrow morning.
- Once this is completed, full access will resume at this entrance.

I would like to thank all shoppers and businesses in the Shopping Centre for their patience and cooperation and would like to wish Domino's the best of luck with their opening later on today.

### New Line

- Work is continuing on New Line, with Traffic Management in place.
- We would like to inform road users that the L-2964 New Line Road, Brooklodge East Road will be closed in full from Monday 20<sup>th</sup> of May. Please see attached information on this Road Closure.

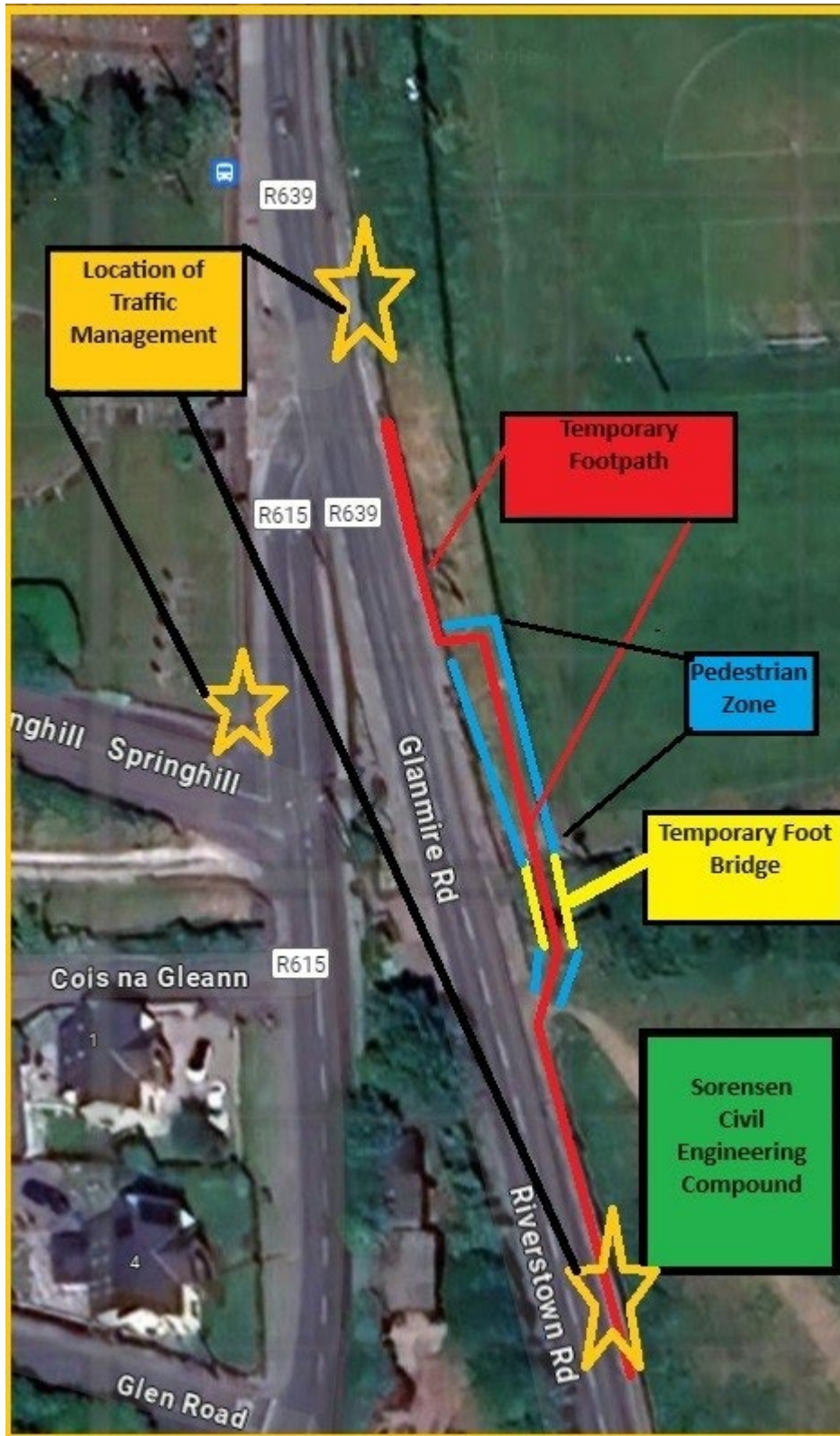
### Copper Valley Vue

- Work is continuing in preparation for the installation of the new bridge at Copper Valley Vue and culvert at Brooklodge.
- There will be internal traffic management on the right-hand side as you enter Copper Valley Vue
- The section from house no 28 to 34 will be closed with access only for these householders.

### R639/Cois na Gleann

- Work will commence on this section for the installation of the new culverts on Monday 29<sup>th</sup> of April.
- To facilitate this works, it will be necessary for traffic management, to ensure the safety of road users, pedestrians, and Sorensen staff.
- There will be Stop/Go from **7am on Monday 29<sup>th</sup> of April** and will continue as follows.
  - Stop/Go - Monday to Friday from 7am - 7pm and Saturday from 7am - 2pm
  - Traffic lights will be in operation from 7pm - 7am Mondays to Fridays

- Traffic lights will be in operation from 2pm on Saturdays until 7am on Monday mornings.
  - This will be in place for the coming months.
- We would kindly ask that you leave extra time for your journey and to observe the traffic management in this area. This has been an issue in the past, and we urge drivers to be aware that breaking lights or the stop/go, may result in an accident.
- Pedestrian access will be maintained at all times in this area. Below is the outline of the temporary footpath/bridge to facilitate the safe passage of pedestrians through the work zone.



If you have any questions about the works being carried out by Sorensen, please do not hesitate to contact me on 086 032 61 71

The above information is subject to change, and I will update you again if there are any changes for the coming week.

On behalf of the entire Sorensen team, I would like to thank residents, businesses, pedestrians and motorists for their continued patience, support, and cooperation.

If you feel this information would benefit someone in your community, please feel free to share this email.

**If you would like to be kept informed, we would encourage you to sign up to our  
FREE Text Alert service.  
You can do this by sending :  
GFRS to 50015.**