

What is Safe Routes to School?

The Safe Routes to School (SRTS) programme launched in March 2021. It is designed to support students to walk and wheel to school by:

- Providing **front of school** treatments which will enhance access to school grounds
- Accelerating the delivery of **walking and wheeling infrastructure** on key access routes to schools
- Expanding the amount of **cycle and scooter parking** available at schools

More than 900 schools applied and were accepted on to the programme. We are one of the schools that was selected to be in Round 1.

Have Your Say - Glanmire Community College, Hazelwood Road, Glanmire, Cork

Cork City Council proposes to undertake various safety improvement measures to improve pedestrian and cycling infrastructure and the front of school environment at Glanmire Community College, Hazelwood Road, Glanmire as part of the Safe Routes to School programme.

The proposed scheme consists of, but not limited to, an upgrade of the existing controlled crossing adjacent to Glanmire Community College to that of a raised toucan crossing, an upgrade of the existing zebra crossing to the East of Hazelwood to a raised zebra crossing, the provision of raised continuous footpaths, advanced warning signage, road markings and high friction coloured surfacing, road realignment including narrowing of the carriageway to facilitate traffic calming and other necessary associated ancillary works.

You can read more about the scheme and make a submission here:

[SAFE ROUTES TO SCHOOL – Glanmire Community College | Cork City Council's Online Consultation Portal](#)

Results of our parent / guardian survey

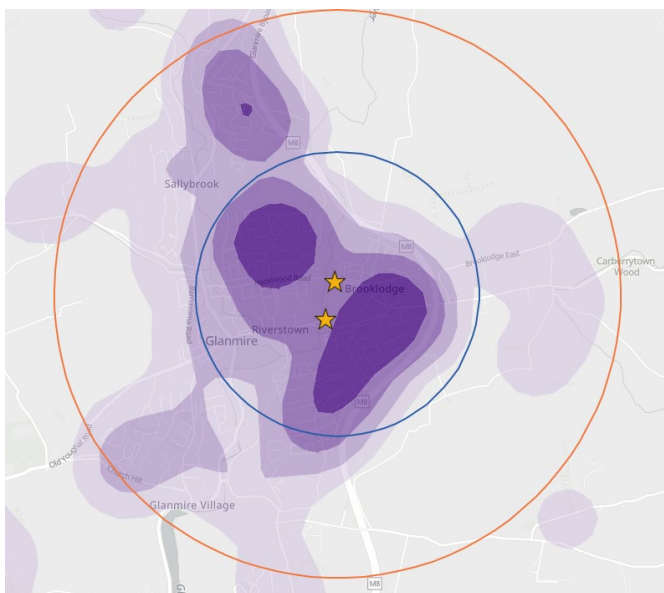
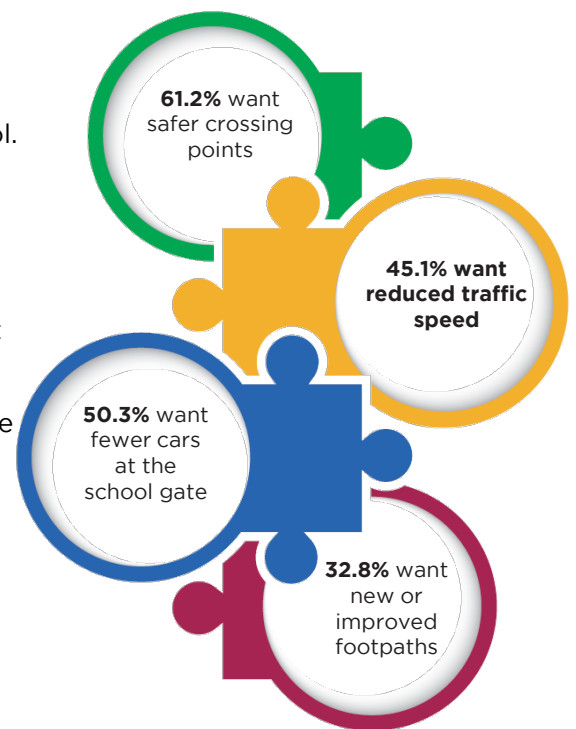
In late 2021, the school shared the SRTS survey with parents and guardians to request feedback on road safety issues around the school. The survey had a **41.4%** response rate.

54.6% of respondents surveyed agreed that road safety is a problem around the school

95.7% of respondents would support works at the front of school that improve student safety, putting pedestrians and cyclists first

96.6% of respondents surveyed would support works that improve the walking and cycling routes to our school

56% of respondents indicated that they live within 2km of the school



★ School Entrance

○ 1km radius

○ 2km radius

Higher density of students travelling from this area

Lower density of students travelling from this area